

## PowerTilt® NG

PTA-Model Actuators for Tilting Couplers



ENGINEERING YOUR SUCCESS.

# The Next Generation of Tilting

Excavator Attachment Manufacturers - Add value by transforming the PowerTilt actuator into a tilting quick coupler by adding side plates, bosses and quick coupler

## **Integral Rotary Union for Coupler**

- Eliminates hoses and hose guards
- Simplified hose routings

## **Reduced Weight**

- Better stability
- Decreased fuel costs

## **Improved Holding Force**

- Increased Productivity

## **Hardened Seal and Bearing Surfaces**

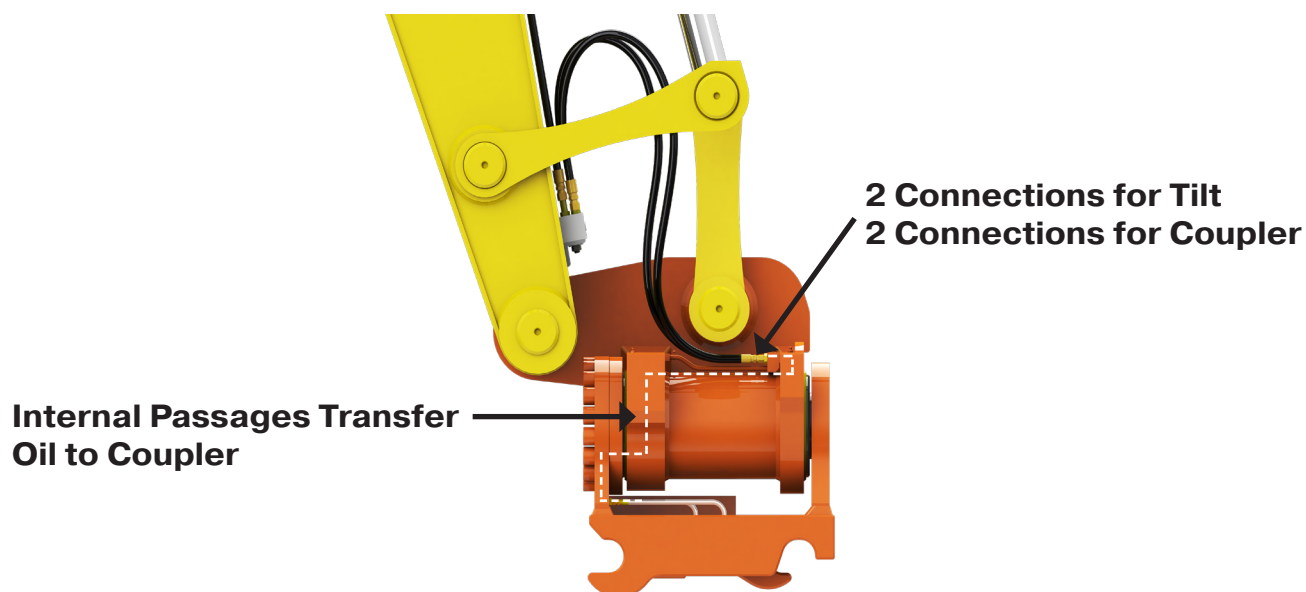
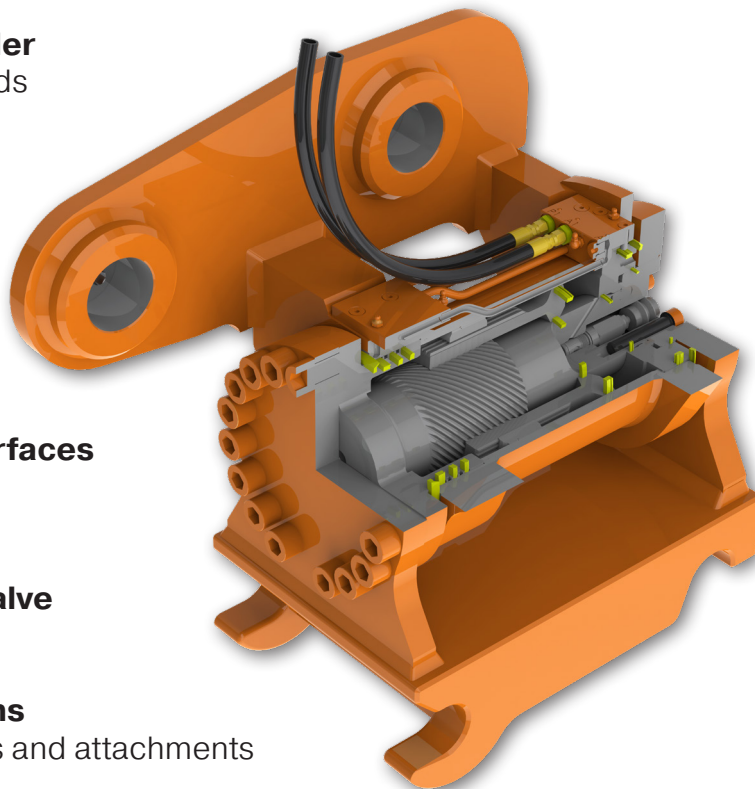
- Reduced cost of ownership
- Longer life

## **Integrated Cross-Port Relief Valve**

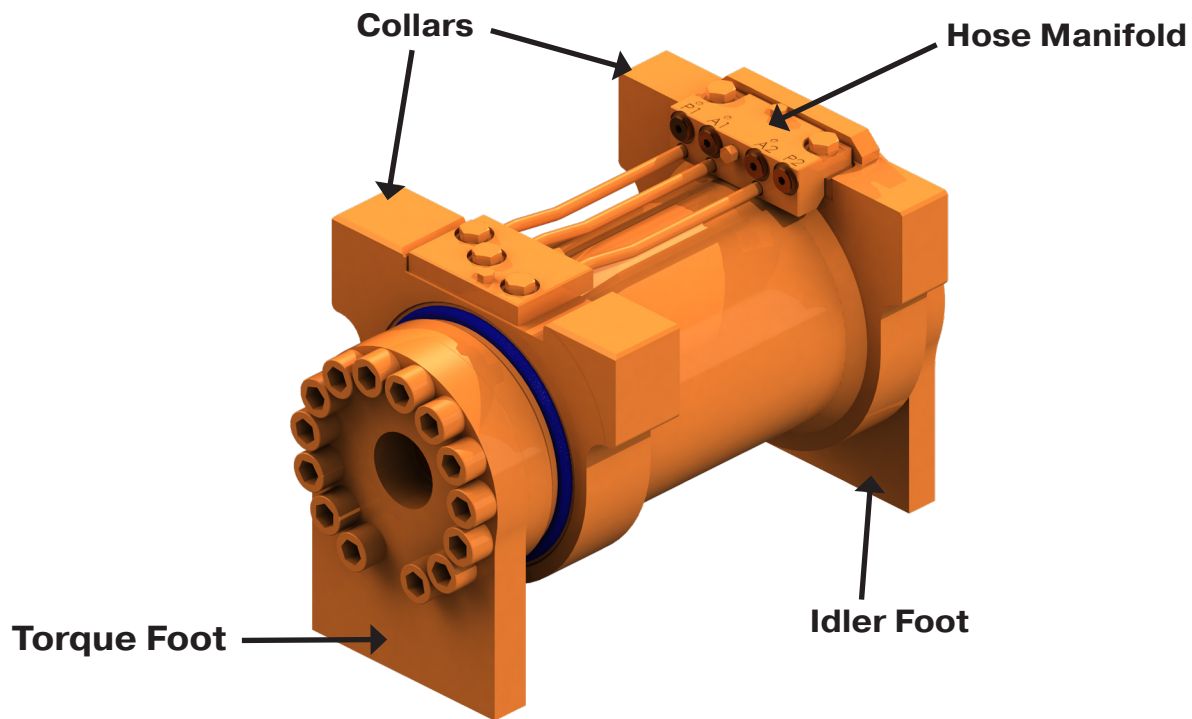
- Overload protection

## **Versatile Coupler Configurations**

- Adaptable to a variety of buckets and attachments



# PowerTilt Terminology



## **PTA**

Model code means PowerTilt actuator configuration is without side plates as shown in the image above.

## **Collars**

Part of the housing that can be welded to.

## **Hose Manifold**

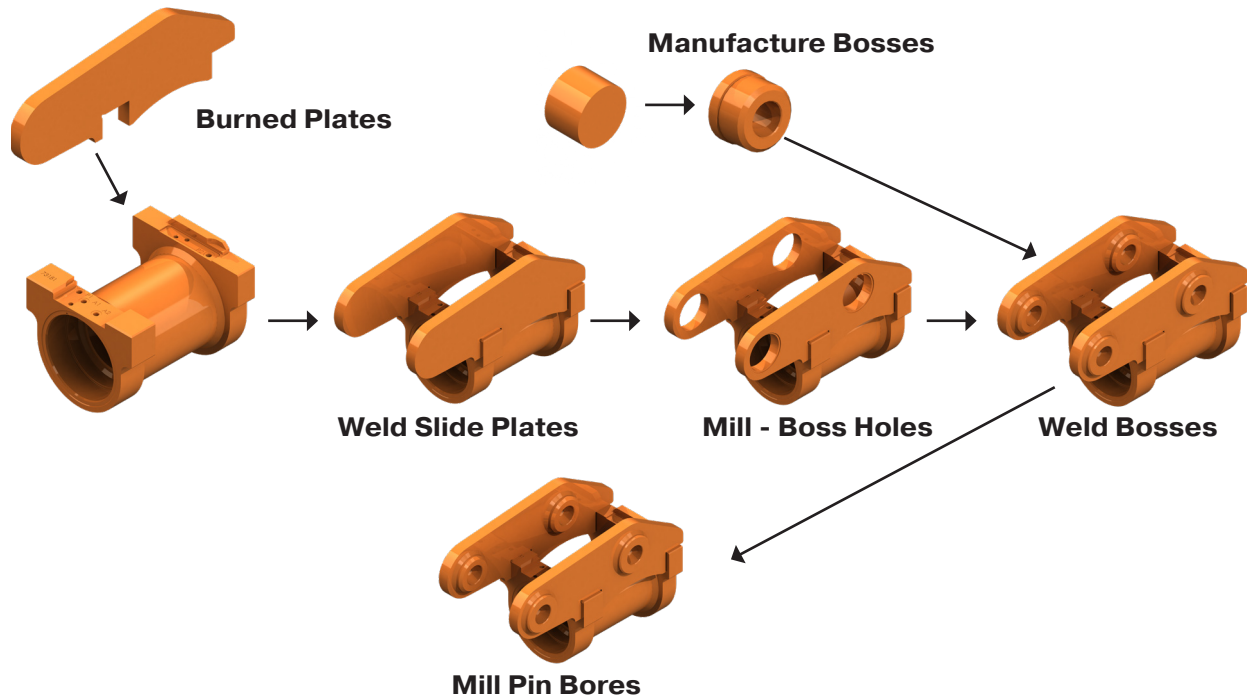
Optional accessory kit: Simplifies hose routing and installation.

## **Torque & Idler Foot**

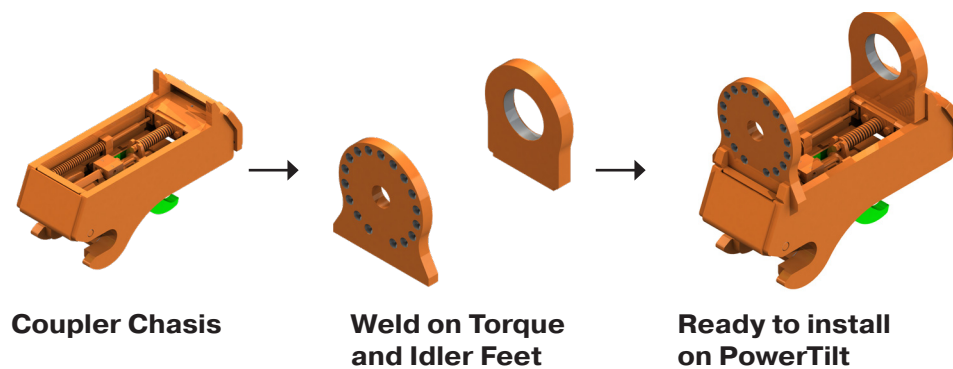
Optional accessory kit: A quick coupler, bucket or other attachment are welded to these.

# PowerTilt Side Plate and Boss Manufacturing Process

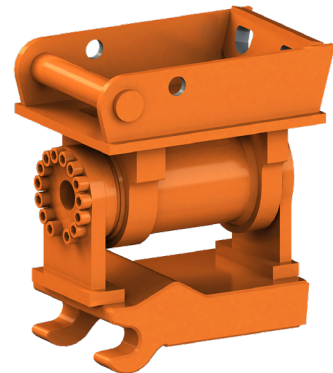
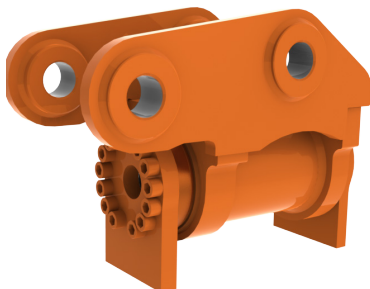
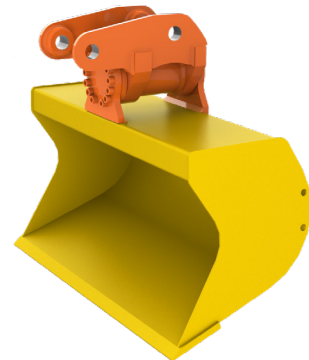
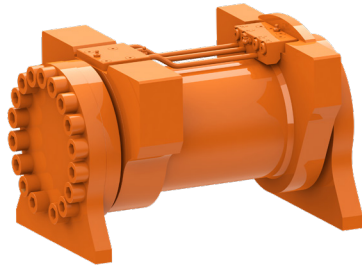
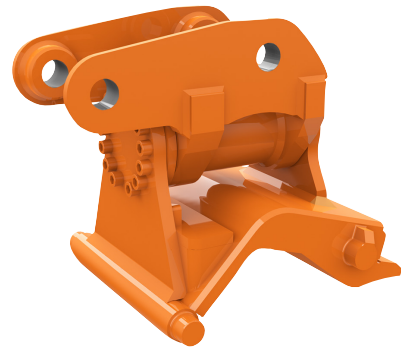
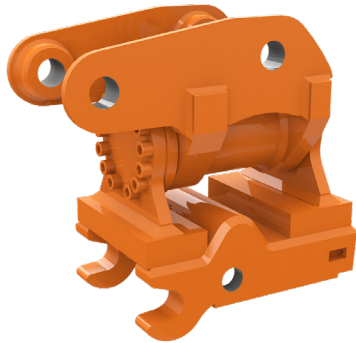
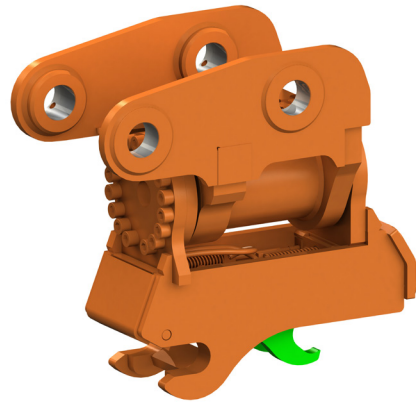
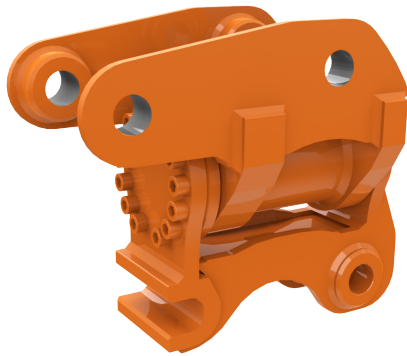
## Example Method



## Coupler Adaptation Process



# Possible Configurations

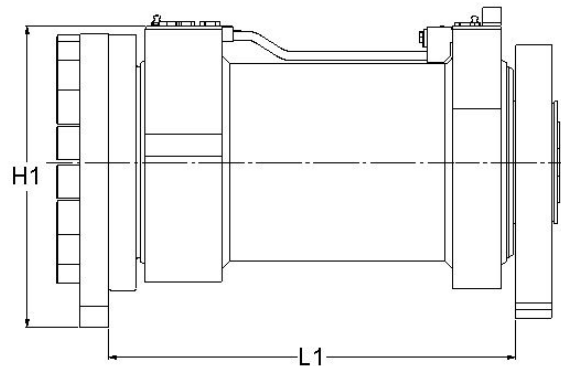
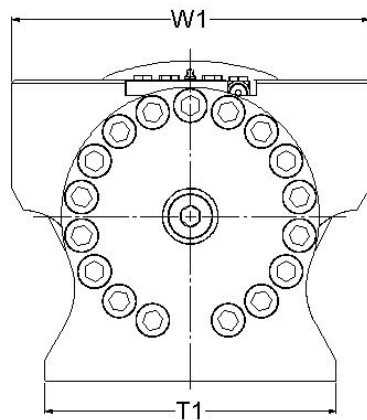


# Specifications

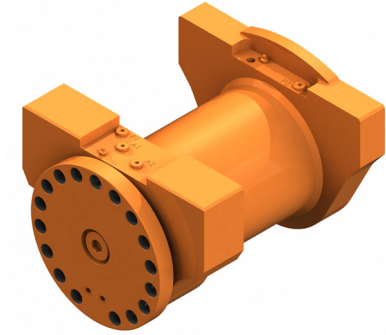
## PowerTilt NG Series

Actual Machine Weight (tonnes)	PowerTilt Model	Height Dim H1 (mm)	Length Dim L1 (mm)	Width Dim W1 (mm)	Width Dim T1 (mm)	Weight (w/manifold / no feet) (lbs)	Weight (w/manifold / no feet) (Kgs)	Drive Torque 3,000 PSI (in-lbs)	Brake Torque 3,250 PSI (in-lbs)	Drive Torque 207 bar (Nm)	Brake Torque 225 bar (Nm)
1.5 - 1.8	4.5*	203	215	190	98	50	23	8,200	20,000	930	2,260
1.9 - 3.0	30	170	242	190	120	59	27	14,400	56,990	1,630	6,430
3.0 - 5.0	50	193	270	218	130	86	39	22,900	82,500	2,600	9,350
5.0 - 7.0	70	259	343	254	160	147	67	38,700	131,400	4,375	14,850
7.0 - 10.0	100	285	378	280	180	185	84	58,000	180,900	6,650	20,450
11.0 - 18.0	180	294	432	380	310	312	142	117,600	360,400	13,300	40,725
18.0 - 23.0	240	375	495	465	330	469	213	158,200	470,000	17,875	53,100
24.0 - 32.0	300	382	535	480	350	557	253	220,000	622,000	24,860	70,280
32.0 - 50.0	465	418	583	550	400	730	332	392,000 @ 4,500 PSI	989,400 @ 4,700 PSI	44,300 @ 310 bar	111,800 @ 324 bar

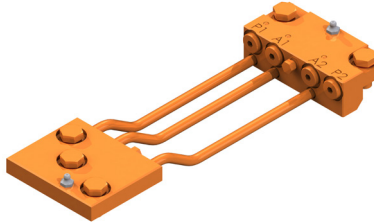
\*PTA-4.5 is not a Powertilt NG model



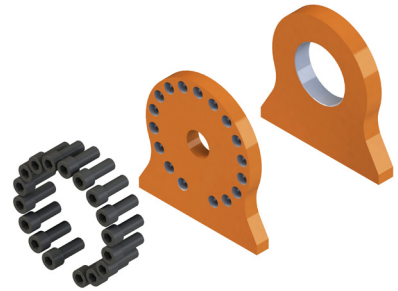
# PTA Model PowerTilts are Sold as:



**PTA Actuator**



**Manifold Kit\***



**Foot Kit\***

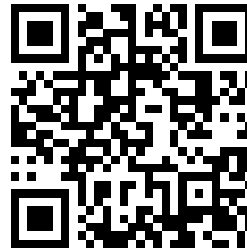
\*Manifold kit and foot kit are optional

## Where to Buy

North America Sales



International Sales





Parker Hannifin Corporation  
**Cylinder and Accumulator Division**  
225 Battersby Ave  
Enumclaw, WA 98022  
phone 360 825 1601  
fax 360 825 1603  
[www.parker.com/helac](http://www.parker.com/helac)